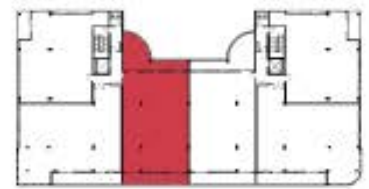




THE LEIGHTON LOFT 2,521 S.F.

3 BEDROOMS |
3 BATHROOMS |
GREAT ROOM |
LAUNDRY ROOM |
STORAGE |
BALCONY |
EAST & WEST DECK |
*OPTIONAL POWDER ROOM



FLOOR PLAN | 888-959-SOHO (7646) | WWW.SOHOSCOTTSDALE.COM



Bahia Live/Work Lofts and Townhomes, LLC, 16580 N. 92nd St., Suite 2004, Scottsdale, Arizona 85260 - (480) 473-3700
In a continuing effort to meet changing conditions, Bahia Live/Work Lofts and Townhomes, LLC reserves the right to make or modify features, specifications, and/or prices without notice or obligation. All square footages and dimensions are approximate. Windows and room dimensions vary per elevation condition. Renderings and animation are artist's illustrations only, and are subject to change. Final plans may vary from preliminary floor plans. No offer to sell or lease can be made and no offer to purchase or lease can be accepted prior to issuance of Arizona Subdivision Public Report.

